



# FROM SOIL TO SOUL: FARM-TO-TABLE ACROSS THE AGES IN ISRAEL



Join us online for a four-part flavorful exploration of Israel's rich food heritage as Gila Levitan guides us from ancient terraces to modern tech farms, and from communal harvests to culinary innovation.

Jan 28 7:00 PM ET

Ancient Practices -  
Agriculture of the  
Ancestors



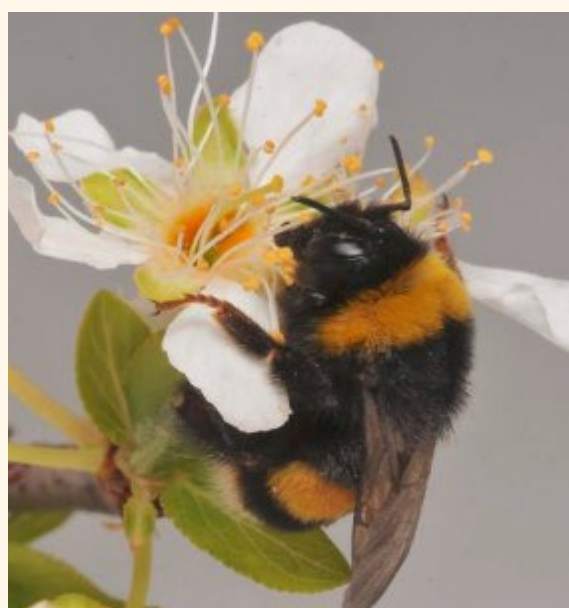
Feb 4 7:00 PM ET

Cultural Traditions -  
The Flavors of  
the Land



Feb 11 7:00 PM ET

Modern Innovation -  
Tech Meets  
Tradition



Feb 18 7:00 PM ET

Farm to Community -  
Food Justice & Urban  
Agriculture



**FOR MORE INFORMATION AND REGISTRATION**  
**walnutstreetsynagogue.org/from-soil-to-soul**  
**info@walnutstreetsynagogue.org**



THIS SERIES WAS MADE POSSIBLE BY A GRANT FROM  
CONGREGATION AHABAT SHALOM RELIGIOUS FUND  
AND OTHER GENEROUS DONORS

